

Invergordon Boating Club

Keel Boat Regatta 2018

Date – 30th June

Sailing Instructions / Notice of Race

1. RULES

Racing will be governed by the Racing Rules of Sailing [RRS], the prescriptions of the RYA and the rules of the appropriate classes, except any of these that are changed by these sailing instructions.

2. CHANGES TO INSTRUCTIONS

May be carried out up to 15 minutes prior to the start signal. Such change will be notified by posting of flag L with details being given by hail or VHF channel 37(M1)

3. SAFETY

Yachts shall comply with ISAF Special Regulations Category 5 [Appendix J refers]. This regulation contains the clause:-

Responsibility of person in charge. The safety of a yacht and her crew is the sole and inescapable responsibility of the person in charge who must do his best to ensure that the yacht is fully found, thoroughly seaworthy and manned by an experienced crew who have undergone appropriate training and are physically fit to face bad weather. He must be satisfied as to the soundness of the hull, spars, rigging, sails and all gear. He must ensure that all safety equipment is properly maintained and stowed and that the crew know where it is kept and how it is to be used.

Each boat must have Third Party Insurance for £2,000,000.

4. HANDICAPS

Shall be by the latest edition of the CYCA handbook. Yachts with no known handicap shall have a handicap allocated at the discretion of The Race Officer.

5. CLASSES

CLASS "A"

For vessels with a CYCA handicap up to and including 21 minutes

CLASS "B"

For vessels with a CYCA handicap of 21.25 minutes and over

The organisers reserve the right to modify the class split dependant on entries

6. MARKS

As indicated on the IBC Course chart. This may be downloaded from the IBC Web Site at <http://www.invergordonboatingclub.org.uk/> or the club hand book can be found via this Link <https://goo.gl/K2kH5B>

7. THE START

- a) Races will be started using rule 26. 5min,4min,1min Start
- b) The warning signal will be Code Flag Y
- c) The start line will be between the flagpole on the Clubhouse and the IBC Mark Number 1.
- d) A boat starting later than 15 minutes after her starting signal will be scored Did Not Start. This changes rule A4.

8. FINISH LINE

As per start line

9. COURSES

Will be indicated from the IBC Starting box and will be selected from the IBC Course Card

10. START TIME

There will be 2 races.

For all yachts: The first race will be at 1100. The second race will start as soon as practical after the completion of the first race

11. RECALL

No recall numbers will be given

12. TIME LIMIT

For all classes is 2.5 hrs hours for each race. This may be extended at the discretion or the race committee.

13. RETIRALS

Yachts that retire during the race shall inform the race officer on VHF Channel 06 and should not cross the finish line.

14. ENTRIES

Entry to be made on the entry form supplied
The fee is to be £10

Cruiser Course Card	
<i>Courses Starting Westward.</i>	
1	1p 3p Xp 1s 8s 5s 3s 1s Xp 8p 1p.
2	1p 2p 5p 7p 1p Xp 8p 1p 2p 5p 7p 1p Xp 8p 1p
3	1p 3p 5p 2p 4p 8p 1p 3p 5p 2p 4p 8p 1p
4	1p 4p 6p 7p 1p 5s 4s 3s 1s
5	1p 2p Xs 5p 7p Xs 1p 2p 5p 7p Xs 1p
6	1p 4s 2p 3p Xp 1s 8p 1p 4s 2p 3p Xp 1s 8p 1p
A	1p 2p 6p Nigg East s, Buss Bank s, Newhall s, 1p.
B	1p 4p 6p Nigg East p, Nigg West p, X s 1p.
C	1p 3p 5p 7s Newhall p, Nigg West p, 6s 1p.
D	1p 2p 1s 8s 1p 2p 1s (light wind from west)
<i>Courses Starting Eastward.</i>	
7	1s 8s 5p 6p 7p 1s 8s 5p 6p 7p 1p.
8	1s 7s 5s 2s Xp 8p 1p 7s 5s 2s Xp 8p 1p
9	1s 6s 5s 8p 2s 1s 6s 5s 8p 2s 1s.
10	1s 7s 4p 5p 2s 1s 8s Xs 1p 4p 5p 2s 1s.
11	1s 8s Xs 2s 1s 5p 7p 1s 8s Xs 2s 1s 5p 7p 1p.
12	1s 6p 7p 1p 5s 3s 1s 6p 7p 1p 5s 2s 1s.
(d)	1s 6p Nigg East s, Buss Bank s, Newhall s, Xs 1p.
(e)	1s 6p 7s Nigg East p, Nigg West p, X s 1p.
(f)	1s 8s 6p Newhall p, Nigg West p, 6s 1p.
<p>Courses are designed to be readily shortened if necessary, to ensure a result is obtained within the time limit. It is the O.O.D's decision to shorten, but if in doubt, it is preferable to record a result.</p> <p>Numbered courses are for general use. Lettered courses are for weekend events.</p>	

15. ENTRY FORMS TO: -

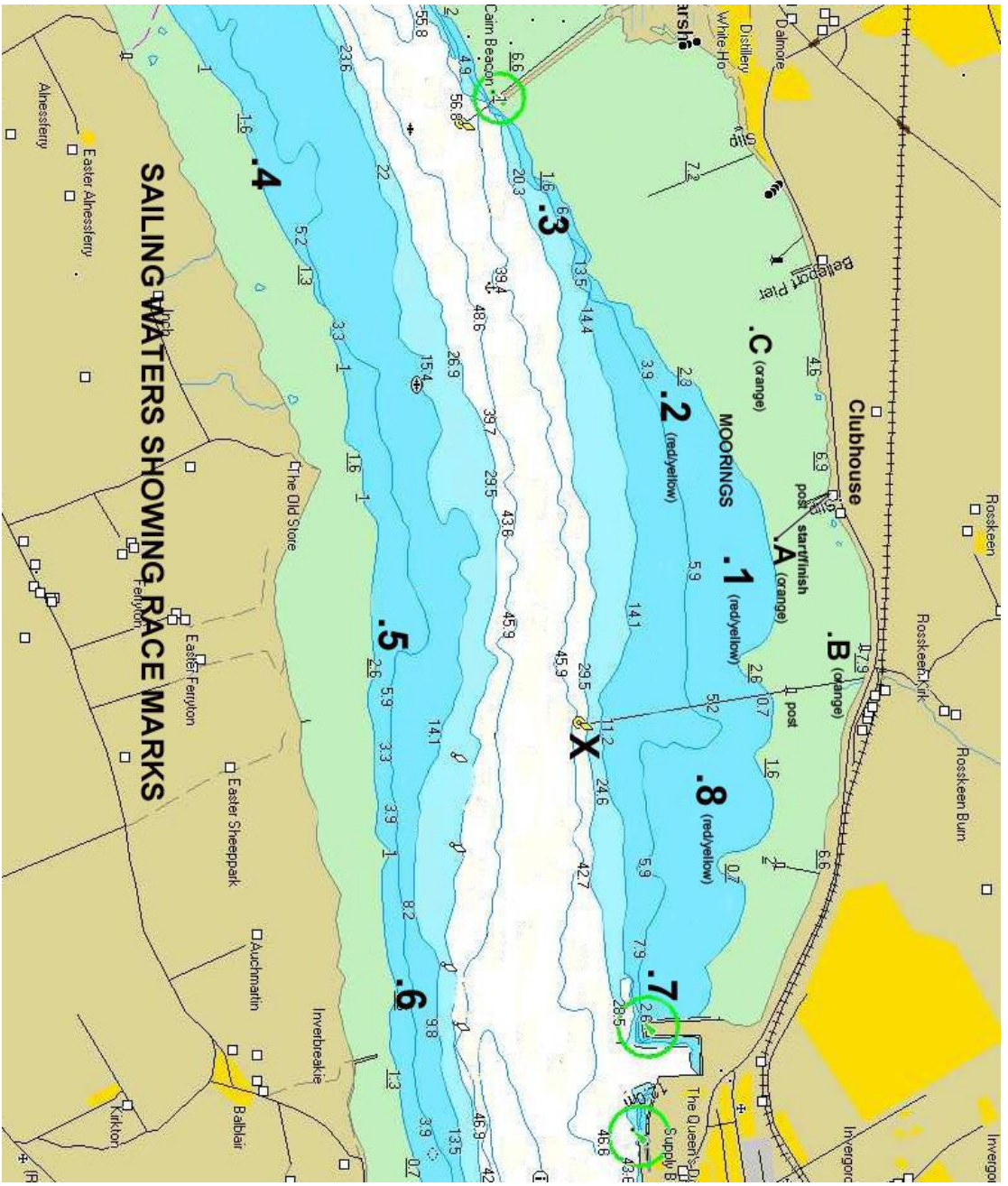
IBC Sailing Secretary Dave Allan, Carn Ban, Swordale, Bonar Bridge, IV243AP
or to the race officer on the day

Radio communications

The race office will be using channel 37 (M1)

Prizegiving:

Will be as soon as possible after the last boat finishes in the IBC Clubhouse
where **excellent** refreshments will be available



SAILING WATERS SHOWING RACE MARKS